

States Engineering

M-1500 Batch Ringmullor Specifications

Capacity: 16 Tons/Hour

Batch Volume: 12 CU. FT.

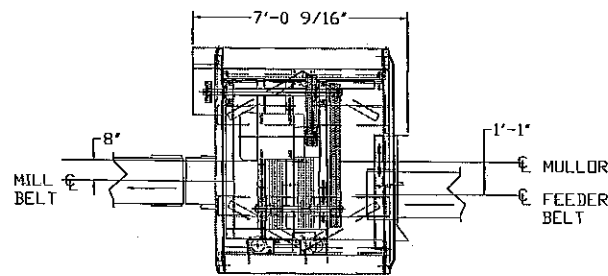
Batch Weight: 800 LBS.

Cycle Time: 1.5-3 Minutes

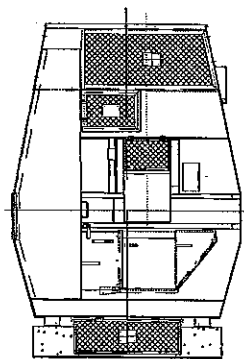
Main Drive HP: 60 HP

Aerator Drive: V-Belt Driven From Main Drive

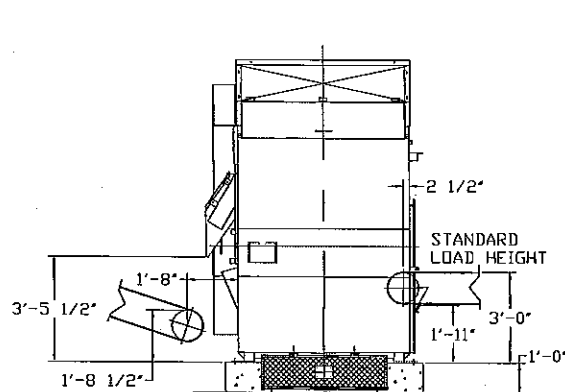
Approx. Weight: 14,000 LBS.



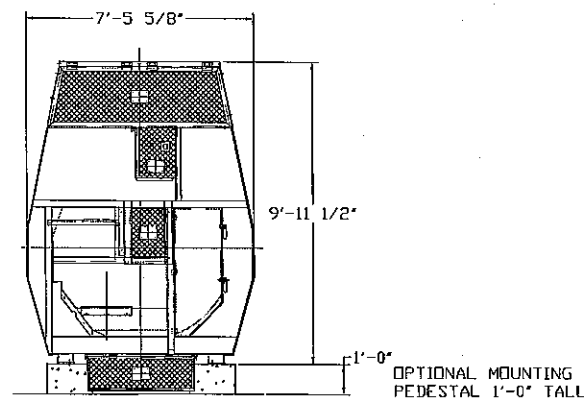
Plan View



Mulling Side



End View



Cooling Side

STATES ENGINEERING
10216 AIRPORT DR.
FORT WAYNE, IN 46809
260-747-6195 PH, 260-747-4990 FAX